

Medication Trolleys

Comparison Guide

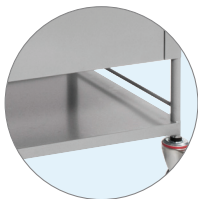
Webstercare® has developed a range of purpose-built medication trolleys suitable for Webster-pak® and Webstersystem® ranges. The trolleys have been designed with ergonomic considerations regarding the height of the working surface and trolley weight, including being fitted with lightweight drawers.

WEBSTERCARE TWO DRAWER TROLLEY

PRODUCT CODE: 300



Bucket with holder for convenient storage of rubbish on the medication round



Storage tray offers additional storage if required

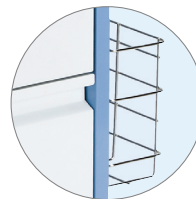
WEBSTERCARE THREE DRAWER TROLLEY

PRODUCT CODE: 301

Stainless steel tray carries medication cups and other miscellaneous items



Deep bucket holds rubbish, discarded medication etc.



Wire book holder carries charts, books etc.

WEBSTERCARE THREE DRAWER FLEXI-SHELF TROLLEY

PRODUCT CODE: 501

Stainless steel tray carries medication cups and other miscellaneous items



Rubber buffers for protection

103mm

88.5mm

Adjustable shelf height range

STANDARD FEATURES ON ALL WEBSTERCARE TROLLEYS



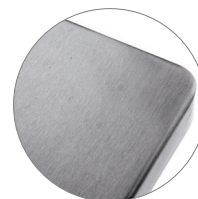
Uni-directional wheel gives you extra control



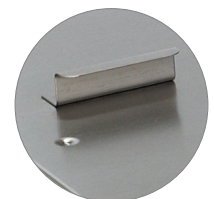
Brake wheel for more control and safety



All wheels rotate 360° for maneuverability



Rounded corners for added safety



Steel clips hold Pharmafiles in place while in use

"Innovative solutions to medication management"™



Comparison Guide

WEBSTERCARE TWO DRAWER TROLLEY

WEBSTERCARE THREE DRAWER TROLLEY

WEBSTERCARE THREE DRAWER FLEXI-SHELF TROLLEY

STORAGE SPACE CAPACITY (APPROX)

Unit Dose 7® Webstersystem®	40 beds holding medications for only one round	30 beds holding medication for all rounds or 50 beds holding medications for only one round	30 beds holding medication for all rounds or 50 beds holding medications for only one round
Webster-pak® Multi Dose	50 beds with no additional storage space	60 beds with no additional storage space	60 beds with no additional storage space
Flexi-pak®	30-40 Beds with no additional storage space		

TROLLEY ATTRIBUTES

Storage Tray at the bottom	Y		
Shelf Extension	Y	Y	Y
Height Adjustable Shelf Extension (Flexi-shelf)			Y
Steel Clips for Pharmaflex/Crusher Support	Y	Y	Y
Light weight drawers	Y	Y	Y
Stainless steel tray on trolley top		Y	Y

TROLLEY DIMENSIONS

Height (of working space)	970 mm	1030 mm	1030 mm
Width: Shelf Up (including handle)	1060 mm	1050 mm	1120 mm
Width: Shelf Down (including handle)	750 mm	770 mm	810 mm
Depth	500 mm	515 mm	515 mm
Weight	41 kg	48 kg	51 kg

MANEUVERABILITY

Foot Release Brake Wheel	Y	Y	Y
Foot Pedal Uni Directional Wheel	Y	Y	Y

COLOURS

Grey with Stainless Steel Top	Y		
Blue with Stainless Steel Top		Y	Y

SECURITY

Lockable Drawers	Y	Y	Y
------------------	---	---	---

ACCESSORIES

Side-mounted basket for medication chart storage		Y	Y
Waste basket and holder	Y	Y	Y
Loose plastic washable tray for liquids		Y	Y

T (02) 9563 4900 | FREE CALL 1800 244 358 | F (02) 9563 4955 | FREE FAX 1800 626 739
 info@webstercare.com.au | www.webstercare.com.au

